

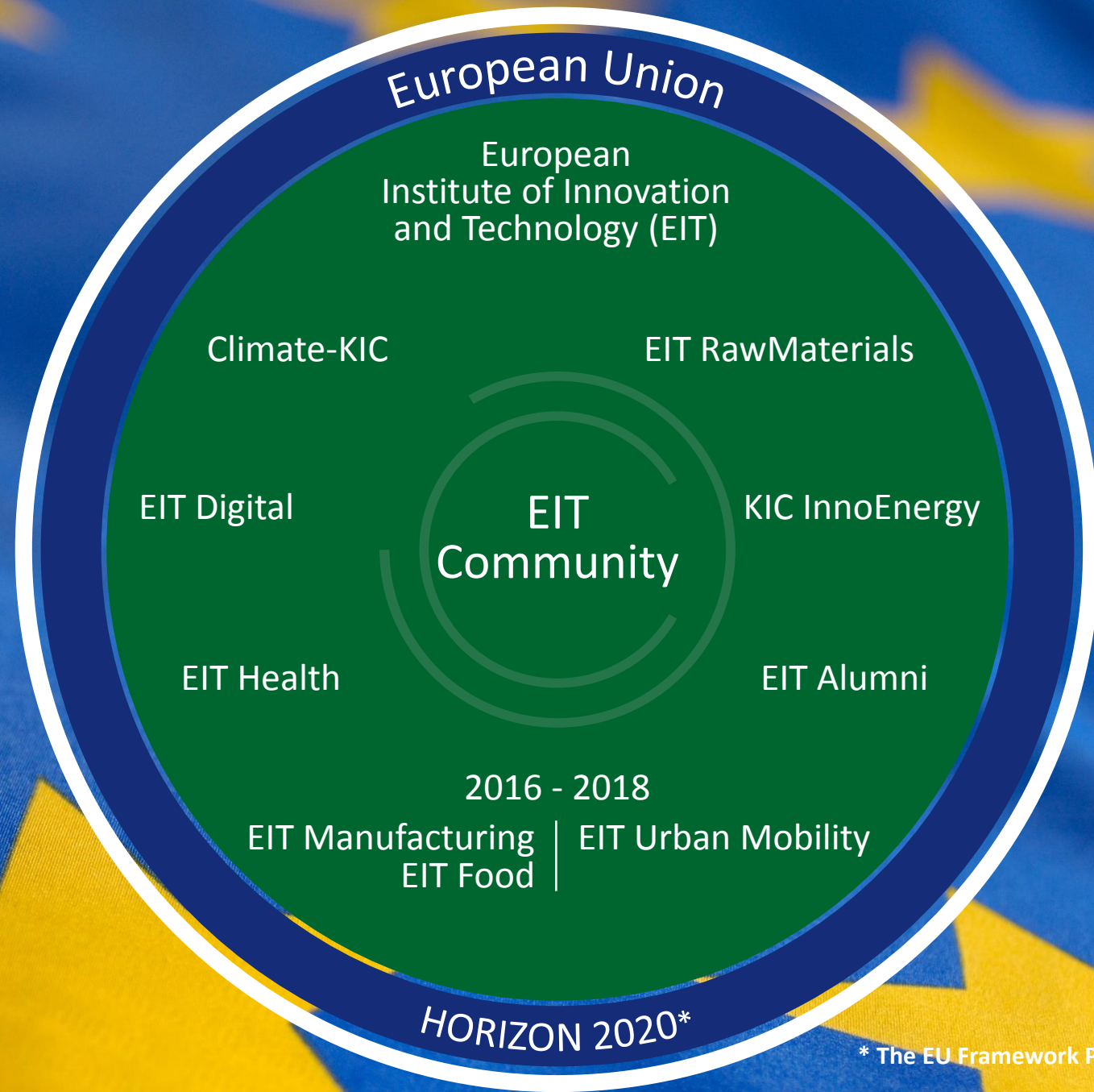
EIT Raw Materials – Connecting Matters

Pier Luigi Franceschini, PhD
Director, CLC South



Outline

- EIT RawMaterials presentation
- Synergy Regions-KIC RM activities



European Union

European
Institute of Innovation
and Technology (EIT)

Climate-KIC

EIT RawMaterials

EIT Digital

KIC InnoEnergy

EIT
Community

EIT Health

EIT Alumni

2016 - 2018

EIT Manufacturing | EIT Urban Mobility
EIT Food

HORIZON 2020*

What is EIT RawMaterials?

- A company formed by 120 European partners from the raw materials sector
- Financially supported by the European Union (2016 ca 20 Meur, 270 Meur over 5-years)
- Aims to improve innovation in the raw materials value chain through financial support and network activities
- Focus is the whole raw material value chain: From exploration to mining, and from processing to recycling, substitution and eco-design
- Pre-commercial funding, TRL 5-7



TRL 5:

Technology validated in relevant environment (industrially relevant environment in the case of key enabling technologies)

TRL 6:

Technology demonstrated in relevant environment (industrially relevant environment in the case of key enabling technologies)

TRL 7:

System prototype demonstration in operational environment

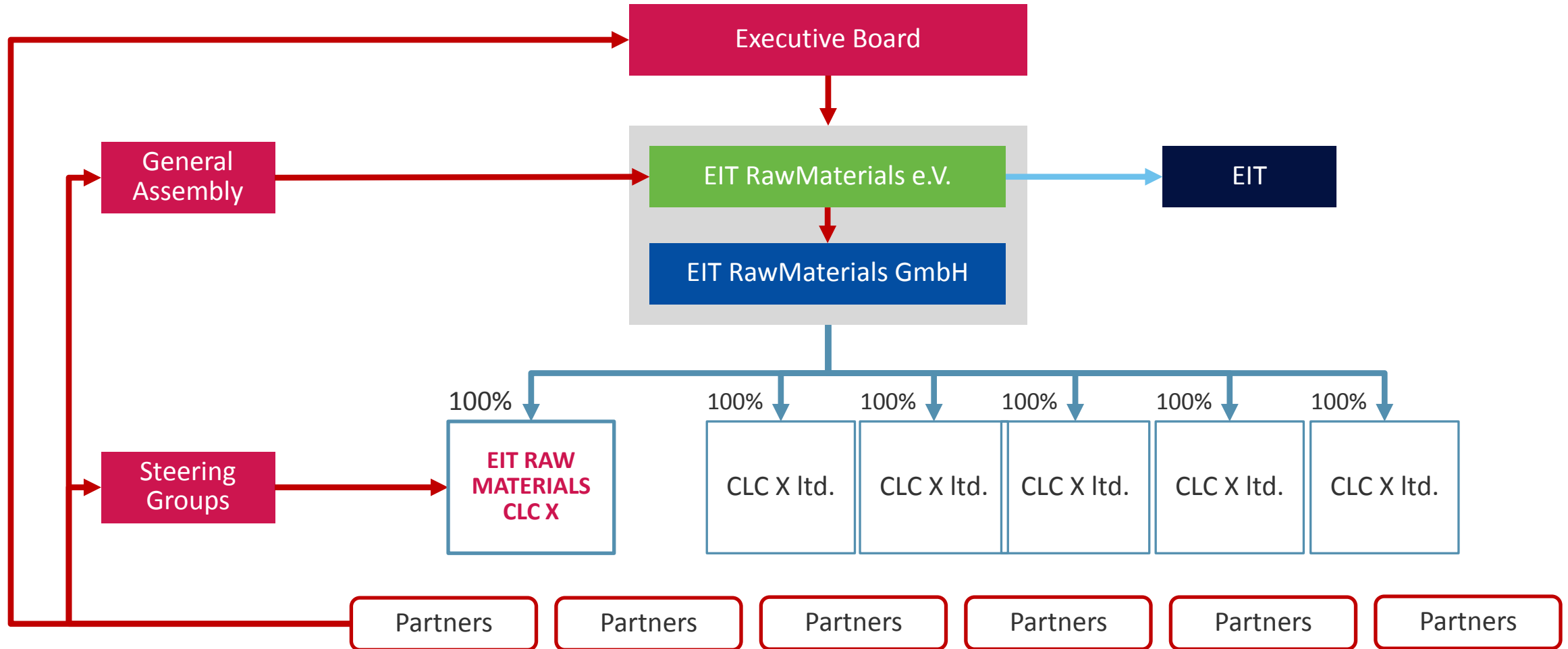
Knowledge and Innovation Themes

- Exploration and raw materials resource assessment
- Mining in challenging environments
- Increased resource efficiency in mineral and metallurgical processes
- Recycling and materials chain optimisation for End-of-Life products
- Substitution of critical and toxic materials in products and for optimised performance
- Design of products and services for the circular economy

EIT Raw Materials Activities

- Funding of Innovation Projects (upscaling projects)
- Support to Networks of Infrastructure (R&D facilities, data infrastructures competence/experts networks) to provide innovative services
- Matchmaking and Networking (brokerage/match events, Ideacamps, Intrapeneurship facilitators)
- Education– funding of Master programmes, PhD course, Summer Schools, Lifelong Learning, Wide Society learning
- Start-up creation, acceleration, incubation. Support to SMEs growth

General Governance Setup and Control



A pan-European network of Excellence

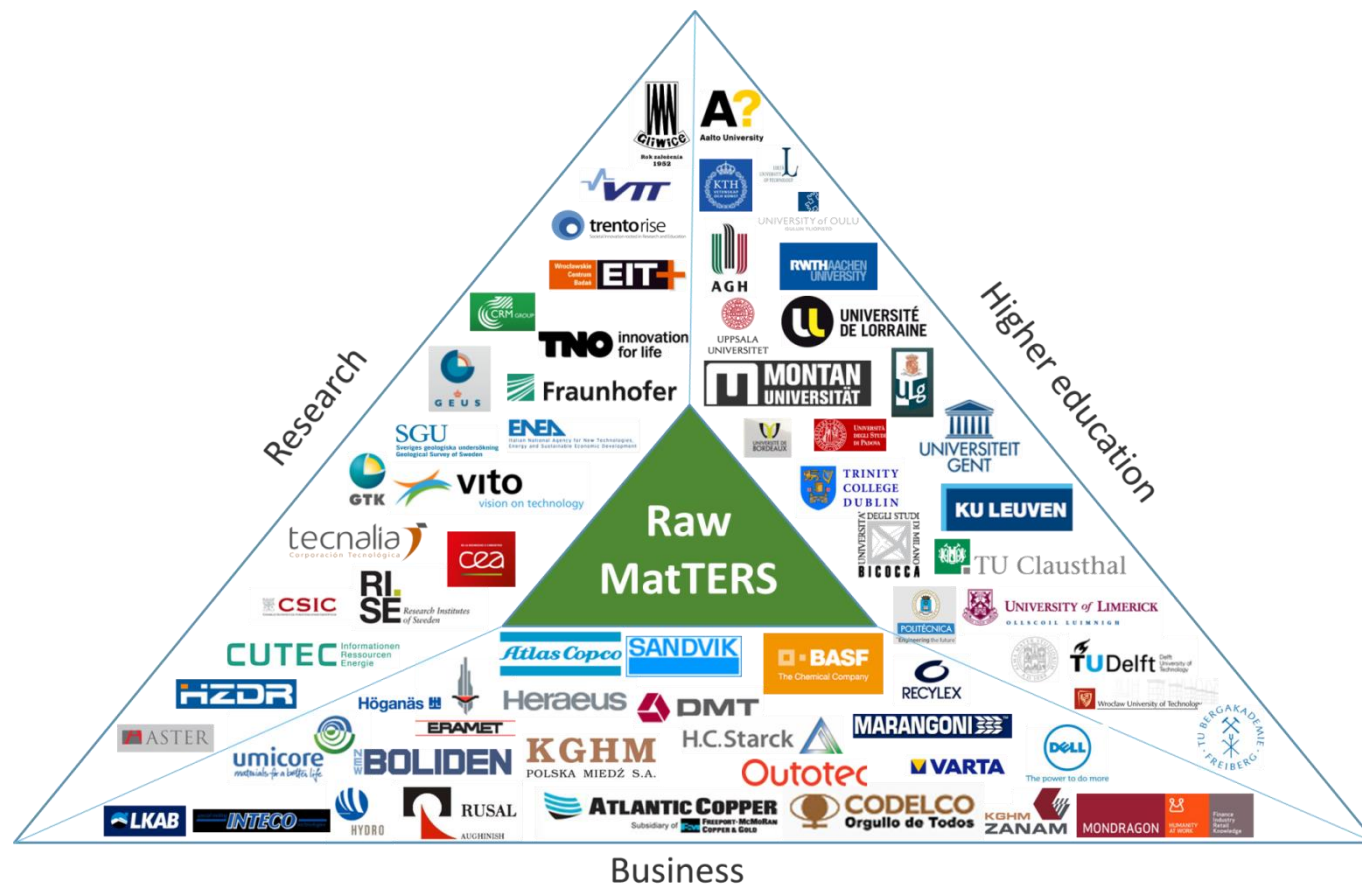
Well-balanced consortium with 115 partners

Partners in 22 EU countries with special focus on ESEE

Full coverage of value chains and commodities (especially CRMs)

Business partners represent >700,000 jobs >200 billion € turnover

Partners' roles in EIP RM commitments: >75% participation 40% coordination



Partners of the Co-location Centre «SOUTH »

CORE PARTNERS	
	CSIC - Spanish National Research Council
	TECNALIA Research & Innovation
	UPM - Universidad Politècnica De Madrid
	ATLANTIC COPPER
	MONDRAGON Corporation
	ASTER
	UNIPD - Università di Padova
	UNIMIB - Università di Milano Bicocca
	MARANGONI S.p.A.
	Hub Innovazione Trento
	ENEA

ASSOCIATE PARTNERS	
	BNZ - BAY ZOLTAN Nonprofit Ltd.
	Politecnico di Milano
	ZANARDI Fonderie S.p.A.
	GCCC (General Council of Catalan chambers of Commerce)
	IGME (Istituto Geològico y Minero de Espana)
	Magnesitas de Navarra S.A.

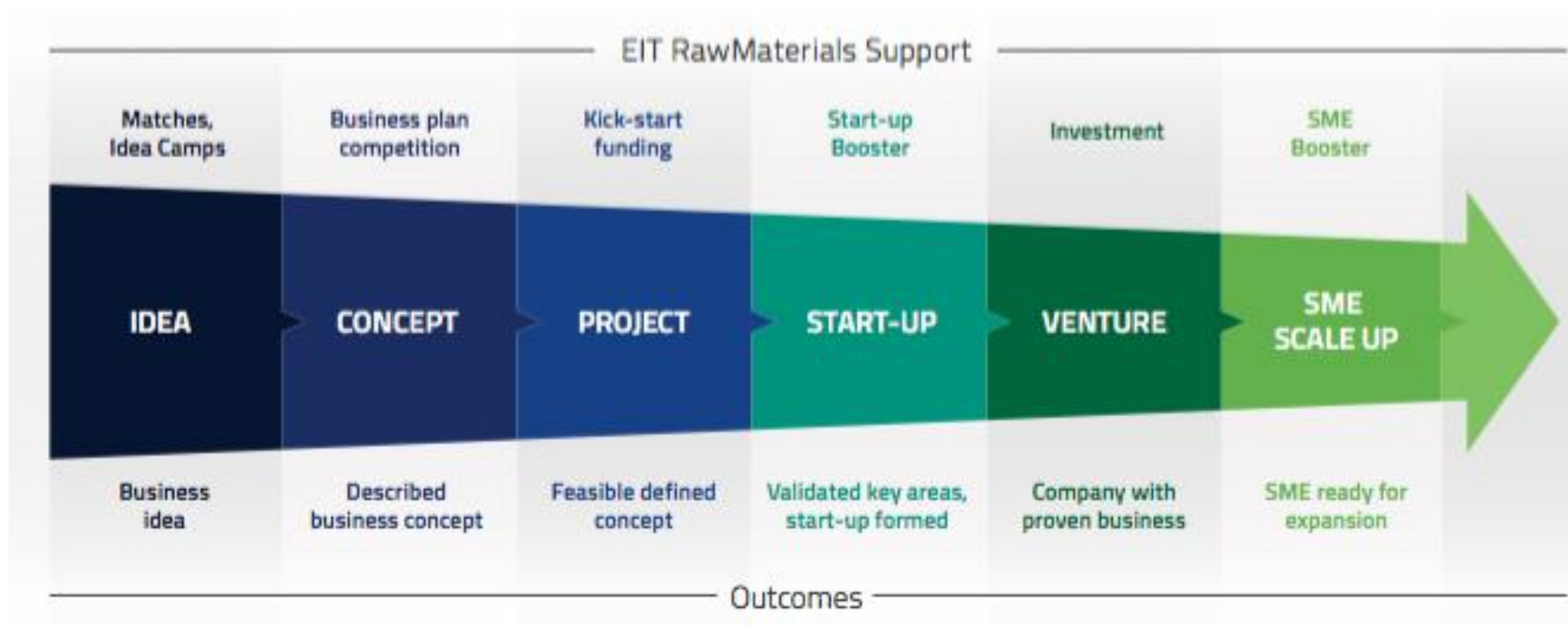
Upscaling Projects

- AMCO Automated Microscopic Characterization of Ores
- CaproKIC Upscaling of one step process for automotive continuous fiber Polyamide 6 composite parts based on the in situ polymerization of ϵ -caprolactam
- COPPLEX New Sustainable Process to treat Complex Raw Materials, Revaluating Residues.
- TAPA Thermoplastic fluid handling Pipes for Automotive sector

Education, training, wide societal learning and entrepreneurship support

- RM@Schools Raw Matters Ambassadors at Schools
- ACCHAIRSTU Attracting Students to RM Metallurgy
- RMCONFDIF RM METALLURGY ANNUAL CONFERENCES CYCLE
- RAMSES Advanced School on Critical Raw Materials Substitution for Energetics and Photonics
- RefresCO Professional Refresher Courses
- EURO-RM KIC RawMaterials Business Plan competition toolkit

Supporting to entrepreneurship



Kick-start Funding, SME/Start-up Booster

- Funding of around 60 keuros for feasibility studies (market study, IPR landscape, design, technical feasibility, etc..)
- Open continuously
- Selection cycle of around 8 weeks
- Process: 5 page concept idea -> invitation to pitching session -> internal evaluation -> funding!
- Deadline - **31st October, visit:**

eitrawmaterials.eu/activities -> Kick starter and SME booster

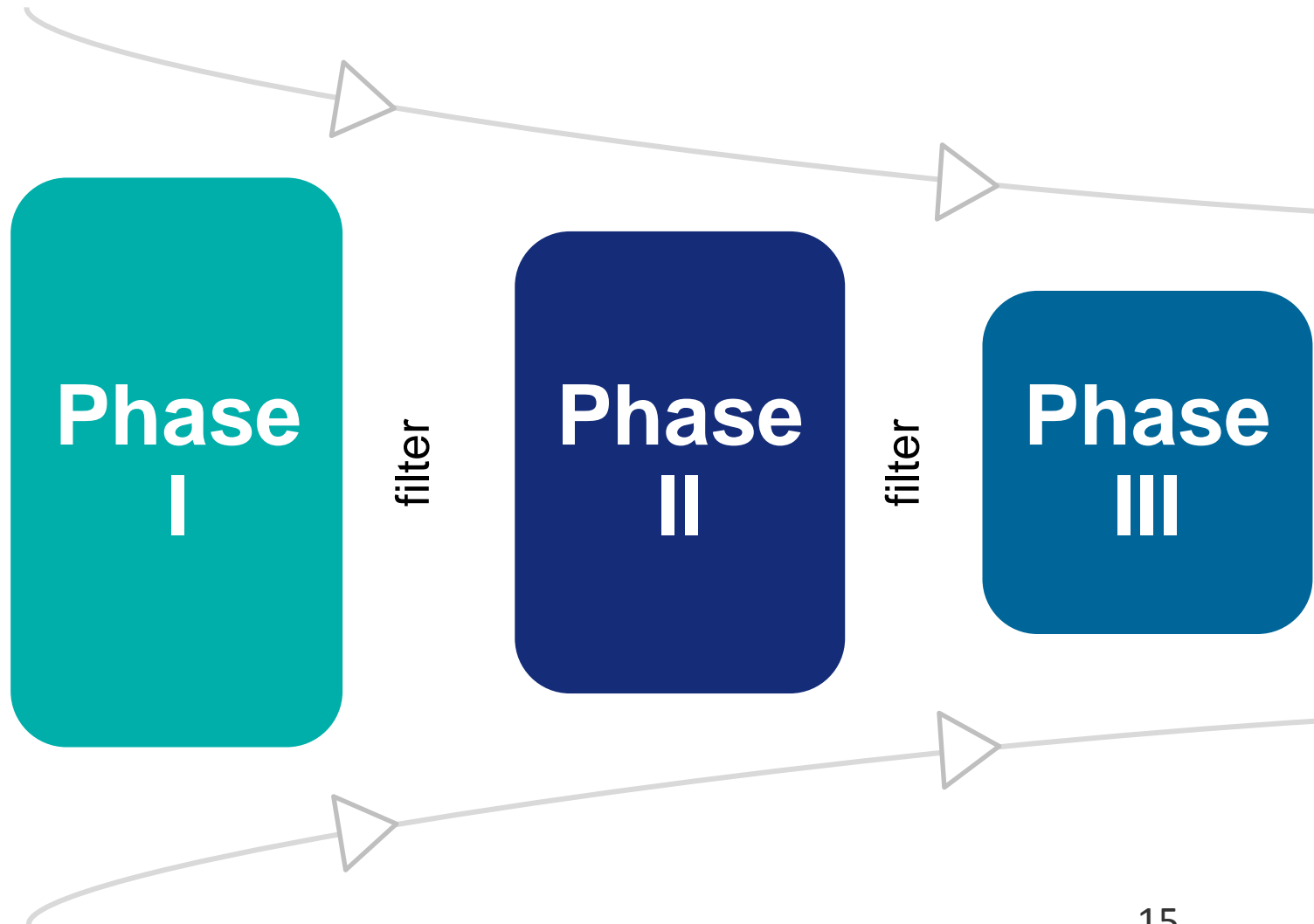




RawMaterials
Connecting matters

Business Ideas
Competition in
Raw
Materials

Phases of the Competition



Importance of the Regional governments in the KIC RM actions

- Synchronize regional support schemes to RD&I with KIC initiatives
- Support the regulatory framework favoring sustainable resources utilisation and innovative business concept (e.g. in the Circular Economy sector)
- Regional schemes to support RD&I may be **upstream** and **downstream** to the KIC activities
 - KIC initiatives build upon existing KCA (**KIC Complementary Activities**)
 - KIC activities may serve to complement lack of resources
- Understanding of the structure of the value chain for RM to better monitor materials flows, reduce inefficiency and support business models aiming to increase value chain efficiency

KIC Raw Materials Initiatives – the Regional Innovation Scheme

- These activities concern the East and Southeast European (ESEE) countries where projects will aim to boost economic development and employment
- The East & South-East Europe (ESEE) region is of particular interest due to its unique RM potential, especially for critical minerals (both geological resources and secondary RM) and its specific geopolitical situation.
- The ESEE region is also included in specific transnational programmes as part of the EU Cohesion Policy.
- Example of eligible countries: Croatia, Greece, Hungary, Romania, Slovakia and Slovenia.

Pilot actions in the EIT RawMaterials: cross-KIC competence centre

- Collaboration of **EIT Digital-Climate KIC-EIT Raw Materials** to
 - Analyze the value chain of WEEE in Italy's Southern regions and perform a market assessment
 - Develop a pilot-phase innovation project idea on WEEE to be funded in 2017 as a cross-KIC collaboration, through regional funds (Structural Funds)
 - Assess the feasibility of a cross-KIC Centre located in the Southern Regions of

EIT RawMaterials · VISION

Turning the raw materials
challenge into a strength for
Europe.

Visit us at eitrawmaterials.eu

Contacts

Pier Luigi Franceschini

pierluigi.franceschini@eitrawmaterials.eu

